

1600 Case

Ref: CP-1600



- Watertight, crushproof, and dust proof
- Open cell core with solid wall design - strong, light weight
- Automatic pressure equalization valve
- O-ring seal
- Comfortable, rubber over-moulded handle
- Stainless steel hardware and padlock protectors
- 2 layer Pick 'N' Pluck™ foam with convoluted lid foam
- Personalised nameplate service available
- Unconditionally guaranteed



Dimensions exterior: 61.6 x 49.3 x 22 cm

Dimensions interior: 54.4 x 41.9 x 20 cm

Weight: 5.1 kg

Certifications: EN60529:1991 and IEC60529:1989: IP-67, ATA Specification 300 - Packaging of Airline Supplies - Category I, STANAG 4280 - DEF STAN 81-41, MIL C-4150H



Black



Tan



Orange



Silver



Yellow

1600 EMS Case

Ref: CP-1600/EMS



Original Pelican case accessory. Fits any Pelican 1600 case. EMS lid organizer and padded divider only, case and contents not included.



1610 Case

Ref: CP-1610



- Watertight, crushproof, and dust proof
- Easy-open, double-step latches
- Open cell core with solid wall design - strong, light weight
- O-ring seal
- Automatic pressure equalization valve
- Fold down handles
- Stainless steel hardware and padlock protectors
- 3 layer Pick 'N' Pluck™ foam with convoluted lid foam
- Personalised nameplate service available
- Unconditionally guaranteed
- Retractable extension handle
- Strong polyurethane wheels with stainless steel bearings

Dimensions exterior: 62.7 x 49.7 x 30.3 cm

Dimensions interior: 55.3 x 42.4 x 27 cm

Weight: 9.15 kg

Certifications: EN60529:1992 and IEC529:1989: IP-67, STANAG 4280 - DEF STAN 81-41



Black



Tan

1620 Case

Ref: CP-1620



- Watertight, crushproof, and dust proof
- Easy-open, double-step latches
- Open cell core with solid wall design - strong, light weight
- O-ring seal
- Automatic pressure equalization valve
- Fold down handles
- Stainless steel hardware and padlock protectors
- 4 layer Pick 'N' Pluck™ foam with convoluted lid foam
- Personalised nameplate service available
- Unconditionally guaranteed
- Retractable extension handle
- Strong polyurethane wheels with stainless steel bearings

Dimensions exterior: 63 x 49.2 x 35.2 cm

Dimensions interior: 54.3 x 41.4 x 31.9 cm

Weight: 9.4 kg

Certifications: EN60529:1992 and IEC529:1989: IP-67, STANAG 4280 - DEF STAN 81-41



Black



Tan

1630 Transport Case

Ref: CP-1630



- Watertight, crushproof, and dust proof
- Easy-open, double-step latches
- Open cell core with solid wall design - strong, light weight
- O-ring seal
- Automatic pressure equalization valve
- Fold down handles
- Stainless steel hardware and padlock protectors
- 3 layer Pick 'N' Pluck™ foam with convoluted lid foam
- Personalised nameplate service available
- Unconditionally guaranteed
- Retractable extension handle
- Strong polyurethane wheels with stainless steel bearings

Dimensions exterior: 79.4 x 61.5 x 44.4 cm

Dimensions interior: 70.3 x 53.3 x 39.4 cm - This case has internal wheel and/or handle wells that will reduce usable area. Please review for each application.

Weight: 14.35 kg

Certifications: EN60529:1992 and IEC529:1989: IP-67, STANAG 4280 - DEF STAN 81-41



Black

1640 Transport Case

Ref: CP-1640



- Watertight, crushproof, and dust proof
- Easy-open, double-step latches
- Open cell core with solid wall design - strong, light weight
- O-ring seal
- Automatic pressure equalization valve
- Fold down handles
- Stainless steel hardware and padlock protectors
- 3 layer Pick 'N' Pluck™ foam with convoluted lid foam
- Personalised nameplate service available
- Unconditionally guaranteed
- Retractable extension handle
- 4 strong polyurethane wheels with stainless steel bearings

Dimensions exterior: 69.1 x 69.8 x 41.4 cm

Dimensions interior: 60.2 x 60.9 x 35.3 cm - This case has internal wheel and/or handle wells that will reduce usable area. Please review for each application.

Weight: 13.95 kg

Certifications: EN60529:1991 and IEC60529:1989: IP-67, STANAG 4280 - DEF STAN 81-41



Black

1650 Case

Ref: CP-1650



- Watertight, crushproof, and dust proof
- Easy-open, double-step latches
- Open cell core with solid wall design - strong, light weight
- O-ring seal
- Automatic pressure equalization valve
- Fold down handles
- Stainless steel hardware and padlock protectors
- 2 layer Pick 'N' Pluck™ foam with convoluted lid foam
- Personalised nameplate service available
- Unconditionally guaranteed
- Retractable extension handle
- 4 strong polyurethane wheels with stainless steel bearings

Dimensions exterior: 80.2 x 52 x 31.6 cm

Dimensions interior: 72.4 x 44.1 x 26.7 cm -

Weight: 11.95 kg

Certifications: EN60529:1991 und IEC60529:1989: Schutzklasse IP-67, STANAG 4280 - DEF STAN 81-41, ATA Specification 300 - Packaging of Airline Supplies - Category I, MIL C-4150H



Black

Tan

Green

Orange



1660 Case

Ref: CP-1660



- Watertight, crushproof, and dust proof
- Easy-open, double-step latches
- Open cell core with solid wall design - strong, light weight
- O-ring seal
- Automatic pressure equalization valve
- Large, fold-down handles for 2 person lift
- Stainless steel hardware and padlock protectors
- 3 layer Pick 'N' Pluck™ foam with convoluted lid foam
- Personalised nameplate service available
- Unconditionally guaranteed
- Retractable extension handle
- 4 strong polyurethane wheels with stainless steel bearings

Dimensions exterior: 80 x 58.1 x 48.2 cm

Dimensions interior: 71.6 x 49.9 x 44.8 cm

Weight: 15.4 kg

Certifications: EN60529:1992 and IEC529:1989: IP-67, STANAG 4280 - DEF STAN 81-41



Black

1690 Case

Ref: CP-1690



- Watertight, crushproof, and dust proof
- Easy-open, double-step latches
- Open cell core with solid wall design - strong, light weight
- O-ring seal
- Automatic pressure equalization valve
- Large, fold-down handles for 2 person lift
- Stainless steel hardware and padlock protectors
- 3 layer Pick 'N' Pluck™ foam with convoluted lid foam
- Personalised nameplate service available
- Unconditionally guaranteed
- Retractable extension handle
- 4 strong polyurethane wheels with stainless steel bearings

Dimensions exterior: 84.7 x 72.2 x 46.3 cm

Dimensions interior: 76.2 x 63.5 x 38.1 cm - This case has internal wheel and/or handle wells that will reduce usable area. Please review for each application.

Weight: 16.1 kg

Certifications: EN60529:1992 and IEC529:1989: IP-67, STANAG 4280 - DEF STAN 81-41



Black

1730 Transport Case

Ref: CP-1730



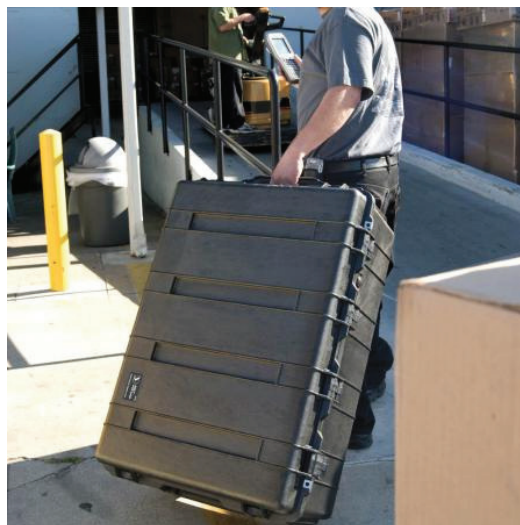
- Watertight, crushproof, and dust proof
- Easy open Double Throw latches
- Open cell core with solid wall design - strong, light weight
- O-ring seal
- Automatic pressure equalization valve
- Optional humidity gauge changes color above 40%
- Fold down handles
- Strong polyurethane wheels with stainless steel bearings
- Stainless steel hardware and padlock protectors
- 5-piece foam set
- Personalized nameplate service available
- Unconditional Lifetime Guarantee of Excellence
- Extra-deep base-to-lid, locking cleats

Dimensions exterior: 95.2 x 68.9 x 36.5 cm

Dimensions interior: 86.3 x 60.9 x 31.7 cm

Weight: 13.6 kg

Certifications: EN60529:1992 and IEC529:1989: IP-67, STANAG 4280 - DEF STAN 81-41



Black



Green

1780T Case

Ref: CP-1780T



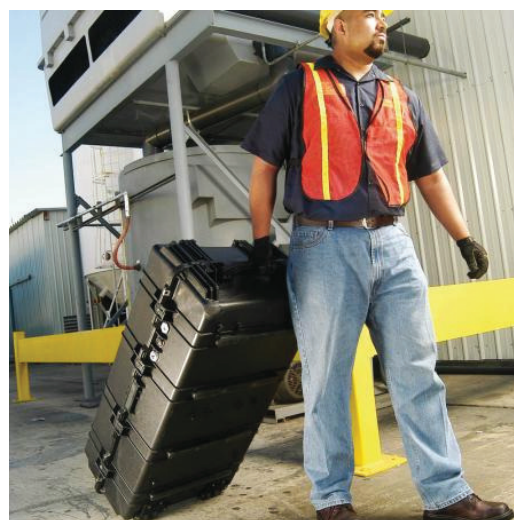
- The new class of XXL Pelli Transport Cases
- 50/50 lid-to-base ratio for easy loading
- Completely detachable lid for full access
- Watertight, crushproof, and dust proof
- Easy-open double-step latches
- Open cell core with solid wall design - strong, light weight
- O-ring seal
- Automatic pressure equalization valve
- Fold down handles
- Stainless steel padlock protectors
- 4 strong polyurethane wheels with stainless steel bearings
- Unconditionally guaranteed

Dimensions exterior: 114 x 64.3 x 41.9 cm

Dimensions interior: 106.6 x 55.9 x 38.3 cm

Weight: 17.25 kg

Certifications: STANAG 4280 - DEF STAN 81-41



Black



Tan