

1080 Hardback Case

Ref: CP-1080



- Resistant to knocks, water and dust
- Moulded plush foam liner - protects notebook from impacts and scratches
- Easy snap anodized aluminum latch
- O-ring seal
- Vent with Gore-Tex™ membrane for auto pressure balance
- Comes in two attractive colour combinations - charcoal grey with silver latches or completely black
- Unconditionally Guaranteed
- Fits notebook computers up to 31.2 x 23.6 x 3.6 cm
- Ideal for Apple iPad + Apple Bluetooth Keyboard
- Will hold up to 24 x 31 cm and A4 documents

Dimensions exterior: 34.9 x 27.8 x 6.5 cm
Dimensions interior: 32.5 x 24.9 x 4.3 cm
Weight: 1.3 kg
Certifications: IP-66



Black

Silver

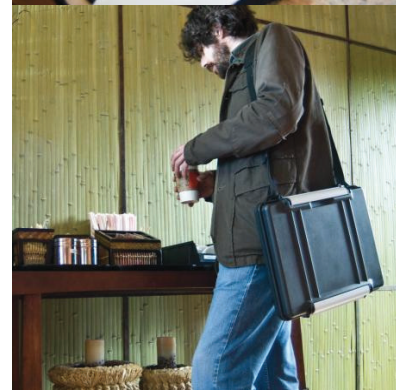
1090 Hardback Case

Ref: CP-1090



- **Resistant to knocks, water and dust**
- **Moulded plush foam liner - protects notebook from impacts and scratches**
- Easy snap anodized aluminum latch
- O-ring seal
- Vent with Gore-Tex™ membrane for auto pressure balance
- Comes in two attractive colour combinations - charcoal grey with silver latches or completely black
- Unconditionally Guaranteed
- Fits notebook computers up to 37.4 x 28.0 x 4.4 cm
- **Will hold up to 24 x 31 cm and A4 documents**

Dimensions exterior: 40.2 x 33.3 x 7.3 cm
Dimensions interior: 38.1 x 28.7 x 4.9 cm
Weight: 1.35 kg
Certifications: IP-66



Black

1430 Top Loader Case

Ref: CP-1430



- **Watertight, crushproof, and dust proof**
- Easy-open, double-step latches
- Open cell core with solid wall design - strong, light weight
- O-ring seal
- Automatic pressure equalization valve
- Comfortable, rubber over-moulded handle
- Stainless steel hardware and padlock protectors
- 3 layer Pick 'N' Pluck™ foam with convoluted lid foam
- Unconditionally guaranteed
- Unique top loading design



Dimensions exterior: 112.1 x 40.9 x 35.5 cm

Dimensions interior: 104 x 32.8 x 30.8 cm

Weight: 9.98 kg

Certifications: IP-65



Black



Tan

1440 Toploader Case

Ref: CP-1440



- **Watertight, crushproof, and dust proof**
- Easy-open, double-step latches
- Open cell core with solid wall design - strong, light weight
- O-ring seal
- Automatic pressure equalization valve
- Stainless steel padlock protectors
- Comfortable, rubber over-moulded handle
- Pick 'N' Pluck™ with convoluted lid foam
- Unconditionally guaranteed
- Retractable extension handle
- **Strong polyurethane wheels with stainless steel bearings**

Dimensions exterior: 50 x 30.5 x 45.7 cm (19.70" x 12.00" x 18.00")

Dimensions interior: 43.4 x 19 x 40.6 cm (17.10" x 7.50" x 16.00")

Weight: 6.1 kg

Certifications: EN60529:1991 and IEC60529:1989: IP-67, STANAG 4280 - DEF STAN 81-41



Black



Yellow

1470 Laptop Case

Ref: CP-1470



- **Watertight, crushproof, and dust proof**
- Open cell core with solid wall design - strong, light weight
- Automatic pressure equalization valve
- O-ring seal
- Comfortable, rubber over-moulded handle
- Stainless steel hardware
- Pick 'N' Pluck™ with convoluted lid foam
- Personalized nameplate service available
- Unconditionally guaranteed
- Double safety locking latches with keys
- **Fits notebook computers up to 33 cm (13 inches)**

Dimensions exterior: 42.4 x 33.2 x 11.1 cm

Dimensions interior: 39.7 x 26.5 x 9.5 cm

Weight: 1.95 kg

Certifications: EN60529:1991: IP-57 (Cat 2)



Black

1490 Laptop Case

Ref: CP-1490



- **Watertight, crushproof, and dust proof**
- Open cell core with solid wall design - strong, light weight
- Automatic pressure equalization valve
- O-ring seal
- Double safety locking latches with keys
- Comfortable, rubber over-moulded handle
- Stainless steel hardware
- Pick 'N' Pluck™ with convoluted lid foam
- Personalized nameplate service available
- Unconditionally guaranteed
- **Fits notebook computers up to 38 cm (15 inches) - max. 44 x 27 x 8 cm**



Dimensions exterior: 50.4 x 35.4 x 11.9 cm

Dimensions interior: 45.1 x 28.9 x 10.5 cm

Weight: 2.45 kg

Certifications: EN60529:1991: IP-57 (Cat 2), STANAG 4280 - DEF STAN 81-41



Black

1490 CC1 Laptop Case

Ref: CP-1490/CC1



- **Watertight, crushproof, and dust proof**
- Open cell core with solid wall design - strong, light weight
- O-ring seal
- Automatic pressure equalization valve
- Stainless steel hardware and padlock protectors
- Comfortable, rubber over-moulded handle
- Personalized nameplate service available
- Unconditionally guaranteed
- **Fits notebook computers up to 38 cm (15 inches) - max. 35.5 x 27.6 x 6.3 cm**
- **Lid organizer, fitted shock absorbing tray, shoulder strap**
- **Double safety locking latches with keys**

Dimensions exterior: 50.4 x 35.4 x 11.9 cm

Dimensions interior: 45.1 x 28.9 x 10.5 cm

Weight: 3.2 kg

Certifications: EN60529:1991: IP-57 (Cat 2), STANAG 4280 - DEF STAN 81-41



Black

1490 CC2 Laptop Case

Ref: CP-1490/CC2



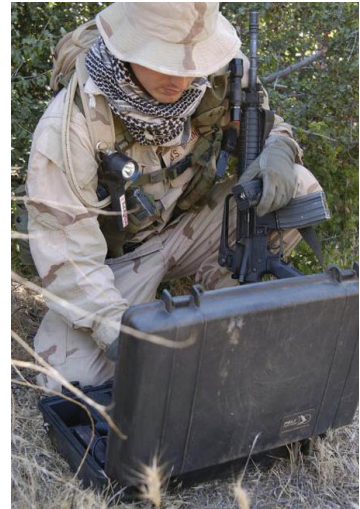
- **Watertight, crushproof, and dust proof**
- Open cell core with solid wall design - strong, light weight
- O-ring seal
- Automatic pressure equalization valve
- Stainless steel hardware and padlock protectors
- Comfortable, rubber over-moulded handle
- Personalized nameplate service available
- Unconditionally guaranteed
- **Fits notebook computers up to 38 cm (15 inches) - max. 44 x 27 x 8 cm**
- **Lid organizer and shoulder strap included**
- **Double safety locking latches with keys**

Dimensions exterior: 50.4 x 35.4 x 11.9 cm

Dimensions interior: 45.1 x 28.9 x 10.5 cm

Weight: 2.8 kg

Certifications: EN60529:1991: IP-57 (Cat 2), STANAG 4280 - DEF STAN 81-41



Black

1495 Laptop Case

Ref: CP-1495



- **Watertight, crushproof, and dust proof**
- Fold-down overmoulded handle
- Automatic pressure equalization valve
- Stainless steel padlock protectors
- Optional personalized nameplate
- Unconditionally guaranteed
- **Fits up to 43 cm (17 inches) laptops**
- **3 dial combination lock included**

Dimensions exterior: 54.9 x 43.8 x 12.4 cm

Dimensions interior: 47.9 x 33.3 x 9.7 cm

Weight: 3.55 kg

Certifications: EN60529:1991 and IEC60529:1989: IP-67, STANAG 4280 - DEF STAN 81-41



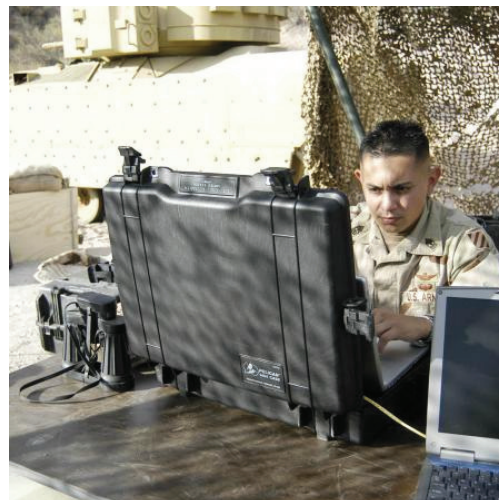
Black

1495 CC1 Laptop Case

Ref: CP-1495/CC1



- **Watertight, crushproof, and dust proof**
- Fold-down overmoulded handle
- Easy-open, double-step latches
- Automatic pressure equalization valve
- Stainless steel padlock protectors
- Nylon padded computer sleeve and accessories pouch
- Lid organizer, shock absorbing tray, and padded shoulder strap
- Optional personalized nameplate
- Unconditionally guaranteed
- **Fits laptops up to 40 x 32 x 7 cm**
- **3 dial combination lock included**



Dimensions exterior: 54.9 x 43.8 x 12.4 cm

Dimensions interior: 47.9 x 33.3 x 9.7 cm

Weight: 5.4 kg

Certifications: EN60529:1991 and IEC60529:1989: IP-67, STANAG 4280 - DEF STAN 81-41



Black



Tan

1495 CC2 Laptop Case

Ref: CP-1495/CC2



- **Watertight, crushproof, and dust proof**
- Fold-down overmoulded handle
- Easy-open, double-step latches
- Automatic pressure equalization valve
- Stainless steel padlock protectors
- Lid organizer, foam piece and padded shoulder strap included
- Optional personalized nameplate
- Unconditionally guaranteed
- **Fits laptops up to 45.5 x 30.0 x 6.0 cm**
- **3 dial combination lock included**

Dimensions exterior: 54.9 x 43.8 x 12.4 cm

Dimensions interior: 47.9 x 33.3 x 9.7 cm

Weight: 5.4 kg

Certifications: EN60529:1991 and IEC60529:1989: IP-67, STANAG 4280 - DEF STAN 81-41



Black

1510LOC Laptop Overnight Case

Ref: CP-1510/LO



- **Watertight, crushproof, and dust proof**
- Retractable extension handle
- Strong polyurethane wheels with stainless steel bearings
- Easy open Double Throw latches
- Open cell core with solid wall design - strong, light weight
- O-ring seal
- Automatic pressure equalization valve
- Comfortable rubber over-moulded top and side handles
- Stainless steel hardware and padlock protectors
- Personalized nameplate service available
- Unconditional Guarantee of Excellence
- **FAA maximum carry on size**
- **Notebook pouch for notebooks up to 36.15 x 28.1 x 4.3 cm included**

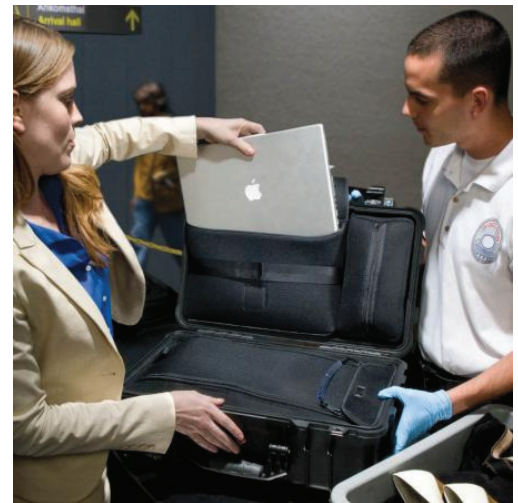
Dimensions exterior: 55.5 x 35.0 x 23.0 cm

Dimensions interior: 50.1 x 27.9 x 19.3 cm -

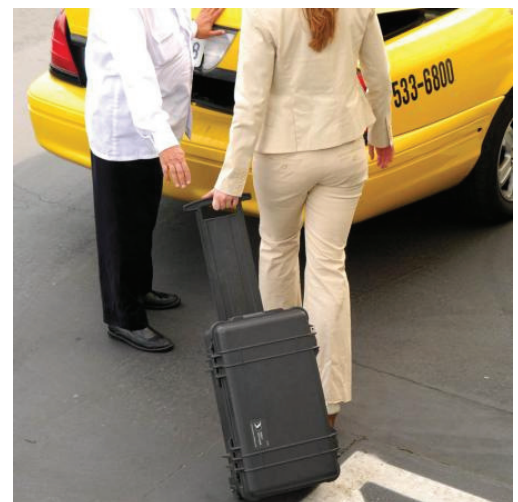
This case has internal wheel and/or handle wells that will reduce usable area. Please review for each application.

Weight: 6.55 kg

Certifications: EN60529:1991 und IEC60529:1989: IP-67, STANAG 4280 - DEF STAN 81-41



Black



1055CC Hardback Case - Tablets 7"



Ref: CP-1055CC



- Designed to protect most popular eReaders and tablets up to 17.8 cm (7")
- Watertight Gasket - Tight seal created when case is shut
- The easy open latch remains shut under pressure or after impact
- Automatic Purge Valve - Keeps water and dust out while balancing air pressure
- Molded plush shock absorbing liner protects from impact and won't scratch eReader or tablets
- Legendary Guarantee of Excellence
- Watertight, crushproof, and dust proof



Dimensions exterior: 23.9 x 17.8 x 3.1 cm (9.42" x 7.02" x 1.24")

Dimensions interior: 21.7 x 14 x 2.2 cm (8.55" x 5.52" x 0.85")

Weight: 0.34 kg



Black

1065CC Hardback Case - Tablet 10"



Ref: CP-1065CC



- Designed to protect most popular 10" tablets, including Apple iPad®, iPad® 2, iPad® 2 with smart cover, iPad® 3, iPad® 3 with smart cover
- Watertight Gasket - Tight seal created when case is shut
- The easy open latch remains shut under pressure or after impact
- Automatic Purge Valve - Keeps water and dust out while balancing air pressure
- Molded plush shock absorbing liner protects from impact and won't scratch tablets
- Legendary Guarantee of Excellence
- Watertight, crushproof, and dust proof

Dimensions exterior: 27.6 x 23.6 x 3.1 cm (10.86" x 9.28" x 1.24")

Dimensions interior: 25.3 x 19.7 x 2.1 cm (9.96" x 7.76" x 0.81")

Weight: 0.33 kg



Black

i1075 Hardback Case For iPad



Ref: CP-i1075



- Designed to protect Apple iPad®, iPad®2 or iPad®3
- Watertight Gasket - Tight seal created when case is shut
- The easy open latch remains shut under pressure or after impact
- Automatic Purge Valve - Keeps water and dust out while balancing air pressure
- Cushion Insert - Unique molded liner protects from impact shock yet won't scratch iPad®
 - Integrated Easel - Optimizes hands free viewing angles in horizontal or vertical positions
 - Accessory Storage - Power cords and earbuds stow below keyboard.
- Removable shoulder strap included
- Legendary Guarantee of Excellence
- Watertight, crushproof, and dust proof

Dimensions exterior: 31.4 x 24.8 x 5.4 cm (12.38" x 9.75" x 2.13")

Dimensions interior: 28.9 x 20.8 x 4.1 cm (11.38" x 8.19" x 1.63")

Weight: 1.0 kg



Black

1075 Hardback Case with Foam



Ref: CP-1075



- Designed to protect various electronics including external hard drives
- Watertight Gasket - Tight seal created when case is shut
- The easy open latch remains shut under pressure or after impact
- Automatic Purge Valve - Keeps water and dust out while balancing air pressure
- Pick N Pluck™ with convoluted lid foam
- Removable shoulder strap included
- Legendary Guarantee of Excellence
- Watertight, crushproof, and dust proof

Dimensions exterior: 31.4 x 24.8 x 5.4 cm (12.38" x 9.75" x 2.13")

Dimensions interior: 28.9 x 20.8 x 4.1 cm (11.38" x 8.19" x 1.63")

Weight: 0.95 kg



Black

1075CC Hardback Case with Liner



Ref: CP-1075CC



- Designed to protect most popular netbooks up to 28.7 cm (11.3")
- Watertight Gasket - Tight seal created when case is shut
- The easy open latch remains shut under pressure or after impact
- Automatic Purge Valve - Keeps water and dust out while balancing air pressure
- Molded plush shock absorbing liner protects from impact and won't scratch netbook
- Removable shoulder strap included
- Can be used as a portable office
- Legendary Guarantee of Excellence
- Watertight, crushproof, and dust proof

Dimensions exterior: 31.4 x 24.8 x 5.4 cm (12.38" x 9.75" x 2.13")

Dimensions interior: 28.9 x 20.8 x 4.1 cm (11.38" x 8.19" x 1.63")

Weight: 0.9 kg



Black

1085 Hardback Case with Foam



Ref: CP-1085

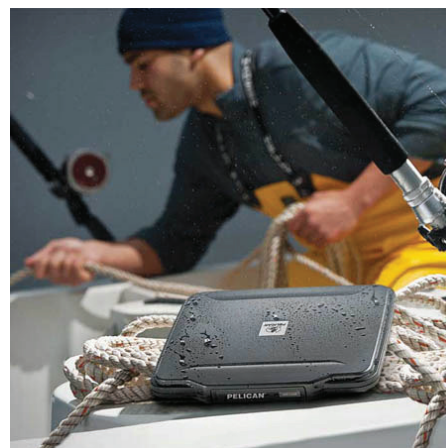


- Designed to protect 14" laptops
- Watertight Gasket - Tight seal created when case is shut
- The easy open latch remains shut under pressure or after impact
- Automatic Purge Valve - Keeps water and dust out while balancing air pressure
- Pick N Pluck™ with convoluted lid foam
- Removable shoulder strap included
- Legendary Guarantee of Excellence
- Watertight, crushproof, and dust proof

Dimensions exterior: 39.7 x 31.5 x 6.3 cm (15.64" x 12.41" x 2.50")

Dimensions interior: 36.3 x 26.3 x 5 cm (14.29" x 10.37" x 1.97")

Weight: 1.18 kg



Black

1085CC Hardback Case with Liner



Ref: CP-1085CC



- Designed to protect 14" laptops
- Watertight Gasket - Tight seal created when case is shut
- The easy open latch remains shut under pressure or after impact
- Automatic Purge Valve - Keeps water and dust out while balancing air pressure
- Molded plush shock absorbing liner protects from impact and won't scratch laptop
- Removable shoulder strap included
- Legendary Guarantee of Excellence
- Watertight, crushproof, and dust proof

Dimensions exterior: 39.7 x 31.5 x 6.3 cm (15.64" x 12.41" x 2.50")

Dimensions interior: 36.3 x 26.3 x 5 cm (14.29" x 10.37" x 1.97")

Weight: 1.18 kg



Black

1095 Hardback Case with Foam



Ref: CP-1095



- Designed to protect 15" laptops
- Watertight Gasket - Tight seal created when case is shut
- The easy open latch remains shut under pressure or after impact
- Automatic Purge Valve - Keeps water and dust out while balancing air pressure
- Pick N Pluck™ with convoluted lid foam
- Removable shoulder strap included
- Legendary Guarantee of Excellence
- Watertight, crushproof, and dust proof

Dimensions exterior: 43.6 x 33.6 x 6.6 cm (17.18" x 13.24" x 2.60")

Dimensions interior: 40.1 x 28.3 x 5.2 cm (15.78" x 11.16" x 2.06")

Weight: 1.6 kg



Black

1095CC Hardback Case with Liner



Ref: CP-1095CC



- Designed to protect 15" laptops
- Watertight Gasket - Tight seal created when case is shut
- The easy open latch remains shut under pressure or after impact
- Automatic Purge Valve - Keeps water and dust out while balancing air pressure
- Molded plush shock absorbing liner protects from impact and won't scratch laptop
- Removable shoulder strap included
- Legendary Guarantee of Excellence
- Watertight, crushproof, and dust proof

Dimensions exterior: 43.6 x 33.6 x 6.6 cm (17.18" x 13.24" x 2.60")

Dimensions interior: 40.1 x 28.3 x 5.2 cm (15.78" x 11.16" x 2.06")

Weight: 1.5 kg



Black